



Light efficiency:

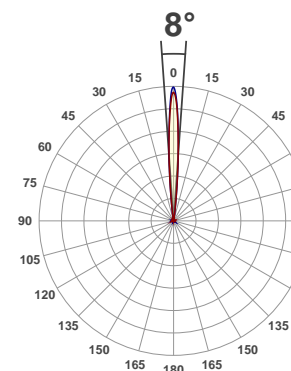
12 Lumen/Watt

Light quality:

CRI: -20.0

Color temperature:

1447 K



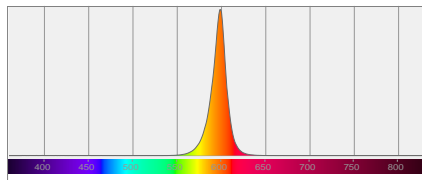
Product name:
MOD QA60

Test:
Amber

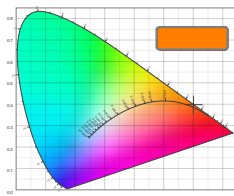
Date:
10/16/2017

Output: 216 lm Power consumption: 18.1 W Peak: 7941 cd

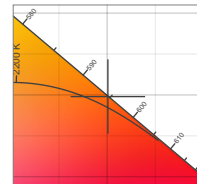
Spectral distribution



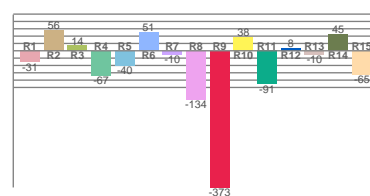
Color coordinates



Zoom color point

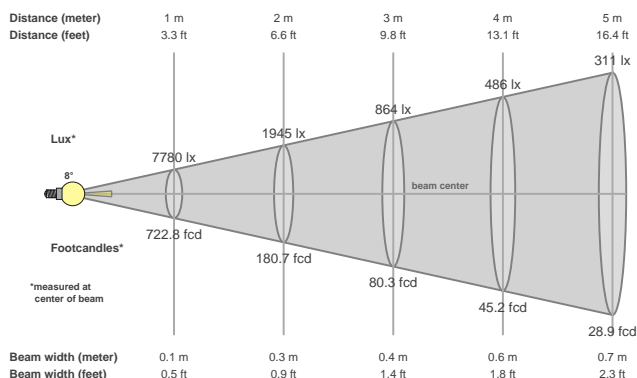


CRI R values



Color temperature	Color rendering index	Red component	Color fidelity	Color gamut	Color quality scale	Color coordinate cie 1931	Color coordinate cie 1931	Color coordinate	Color coordinate	Color diviation from black body
CCT	CRI	CRI R9	TM30 Rf	TM30 Rg	CQS	x	y	u	v	Δuv
1447 K	-20.0	-372.7	1.1	5.8	0.0	0.601	0.398	0.366	0.363	0.0031

Beam details



Beam angles

Beam angle 50%	Field angle 10%	Cutoff angle 2,5%
8°	14.3°	19.6°

Beam intensities

Peak intensity	Int. ratio in 120° cone	Int. ratio in 90° cone
7941 cd	95.4%	94.4%

Power

Power	Power factor	Power frequency
18.1 W	0.52	60 Hz

Nominal voltage	Voltage	Current
230 V	117 V	0.302 A

Beam intensities from 1-20m

1m	2m	3m	4m	5m	6m	7m	8m	9m	10m	11m	12m	13m	14m	15m	16m	17m	18m	19m	20m
3.3ft	6.6ft	9.8ft	13.1ft	16.4ft	19.7ft	23ft	26.2ft	29.5ft	32.8ft	36.1ft	39.4ft	42.7ft	45.9ft	49.2ft	52.5ft	55.8ft	59.1ft	62.3ft	65.6ft
7780lx	1945lx	864lx	486lx	311lx	216lx	159lx	122lx	96lx	78lx	64lx	54lx	46lx	40lx	35lx	30lx	27lx	24lx	22lx	19lx
722.8fcd	180.7fcd	80.3fcd	45.2fcd	28.9fcd	20.1fcd	14.8fcd	11.3fcd	8.9fcd	7.2fcd	6fcd	5fcd	4.3fcd	3.7fcd	3.2fcd	2.8fcd	2.5fcd	2.2fcd	2fcd	1.8fcd